



## Dublin Port: Berth 7

### SYNOPSIS

ThorTech successfully completed a large scale re-surfacing project at Sea Truck Berth 7, Dublin Port.

The project involved shot blasting and the application of the Traffideck surface system.

The work was scheduled appropriately to accommodate the busy port's traffic and operations.



### BRIEF

ThorTech were tasked to resurface the link span and pontoon at Sea Truck Berth 7, within a timescale of 5 days. The schedule was a little more challenging as the Berth was required to be open for traffic on several occasions throughout the programme.

### PROCESS

Taking into account the Berth's scheduled traffic, ThorTech arranged the work around the loading and unloading of freight.

The old surfacing of the 350m<sup>2</sup> linkspan and pontoon was removed over two days.

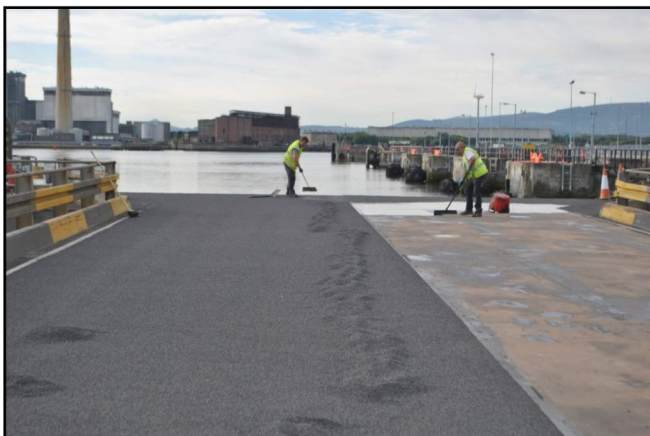
Following this, the shot blasting and installation of the Traffideck system was completed in two stages, enabling port operations to continue in-between.

Due to the size of the vessel docking at the berth, some of the deck areas were trafficked prior to receiving the Grip 4000x wearing course.

These areas received E5 100% Solids Primer applied at an extra 50% which was dressed with Chelford 30 Quartz. This treatment removed the tyre marks without having to re blast, saving time and money. The Grip 4000X dressed with a 3-5mm Dynagrip Aggregate was then applied.

### OUTCOME

The project was successfully completed on time and on budget, without any problems or interruptions to port operations. Berth 7 now continues to run efficiently and safely with its new surfaces.



View our gallery of images from the project:  
<http://goo.gl/r6yz9E>

Find out more about our Bridges & Marine surfacing services: <http://goo.gl/NWhSr5>

ThorTech Bridges & Marine LTD  
Unit 7/8, Lamby Way Workshops,  
Lamby Way,  
Cardiff  
CF3 2EQ  
**+44 (0)29 2048 9100**